



# CORPORATE WELLBEING

GOODNESTONE PARK

# WELCOME TO GOODNESTONE PARK



Goodnestone Park is a privately owned Estate set amongst 2,000 acres of woodland, parkland and agricultural land with a Grade II\* listed Manor House located in the heart of the Estate. Goodnestone is also home to one of the finest gardens in Kent which covers fifteen acres and is a haven for biodiversity with sustainable management a core element of the Estate.

The landscape for corporate events has changed in recent times and at Goodnestone our aim is to offer a truly holistic experience involving the guest with all aspects of the Estate. The Manor House has 12 bedrooms meaning our retreats are perfect for strategy days, team away days, brainstorming, board meetings or if you just feel your team need a break!

**Our event coordinator will work with you to build a truly unique experience tailored to your needs.**



## CONTENTS

|   |    |
|---|----|
| CORPORATE OFFERING                        | 4  |
| THE MANOR HOUSE                           | 7  |
| EXTRAS                                    | 11 |
| THE ORANGERY                              | 12 |
| IN-HOUSE CATERING                         | 14 |
| BONNINGTON COTTAGE                        | 17 |
| CORPORATE ACTIVITIES                      | 20 |
| FORAGING WITH MILES IRVING                | 21 |
| NATURAL PATHWAYS                          | 22 |
| WILD CLASSROOM                            | 23 |
| FARM TOURS, WORKSHOPS AND NONINGTON FARMS | 24 |
| GARDEN TOURS WITH PAUL BAGSHAW            | 25 |
| WORKSHOPS WITH ANNAS COUNTRY FLOWERS      | 26 |
| COCKTAIL MASTERCLASSES                    | 26 |
| YOGA WITH ALEXANDA POPPY                  | 27 |
| BREATHING SPACE RETREATS                  | 28 |

#### ON THE ESTATE

## CORPORATE OFFERING

Our corporate offering is tailored to the needs of each client, our base package includes the following:

- ◆ Exclusive use of the 12-bedroom Manor House and grounds
- ◆ Access to 15 acres of garden space
- ◆ Dedicated onsite house manager
- ◆ Exclusive use of The Coach House.





A FAMILY ESTATE

## THE MANOR HOUSE



The house at Goodnestone Park is a Queen Anne style mansion. It has undergone many architectural changes since it was first built in 1704 by Sir Brook Bridges. His descendants have remodelled the house throughout the years. One such descendant married an ancestor of the current Lord FitzWalter in 1756.

Today, the house and estate remain in the hands of the FitzWalter family, who continue to oversee its management.

## PRICING

# BASE PACKAGES

### TWO-NIGHT WEEKEND STAY

- ◆ Friday – Sunday
- ◆ Use of Manor House with Coach House
- ◆ Check in 9.00 am / Check out 4pm

£7,500

### ONE DAY EVENT

- ◆ Mid-Week (Tuesday, Wednesday, Thursday)
- ◆ Use of Manor House (Ground Floor) with Coach House
- ◆ Between 9.00 am – 10.00pm

£1,850

All prices include VAT.

### THREE-NIGHT WEEKEND STAY

- ◆ Friday – Sunday
- ◆ Use of Manor House with Coach House
- ◆ Check in 9.00 am / Check out 4pm

£8,200

### ONE-NIGHT STAY

- ◆ Mid-Week (Tuesday, Wednesday, Thursday)
- ◆ Use of Manor House with Coach House
- ◆ Check in 9.00 am / Check out 4 pm

£4,500

### SEVEN-NIGHT STAY

- ◆ Seven night stay
- ◆ Use of Manor House with Coach House
- ◆ Check in 9.00 am / Check out 4pm

£11,950

### TWO-NIGHT STAY

- ◆ Mid-Week (Tuesday, Wednesday, Thursday)
- ◆ Use of Manor House with Coach House
- ◆ Check in 9.00 am / Check out 4 pm

£6,250





#### ADDITIONAL SERVICES

## EXTRAS

We offer additional services that can be chosen to compliment and complete your picked base package to make your event truly memorable. Our staff can cater for private dinners, drinks receptions and cocktail evenings.

A PLACE TO CELEBRATE

## THE ORANGERY



The Orangery at Goodnestone Park is a semi-permanent timber framed marquee, available as an add-on to your corporate retreat. The marquee comes fully equipped with a directional speaker system, tables and chairs, a generator, lighting and toilet facilities suitable for your event.

Please note the Orangery is only available between the months of  
**1st March – 31st October.**



### HIRING THE ORANGERY

The Orangery is multi-functional and has internal partitions allowing it to be adapted for all corporate events including dinner parties, conferences or staff parties and events. Maximum capacity for corporate events is **100 seated.**

We have a range of caterers and other preferred suppliers that you can use for your event. We can also provide a Goodnestone Bar for the event.

The Orangery can be added as an extra for use throughout your stay, prices are dependent on the type and size of event but prices range from **£2,000 - £5,500.**

*Indicative prices listed above include VAT and may be subject to change.*



## IN-HOUSE CATERING

Ronald our house manager and his partner Judith are our in-house caterers at Goodnestone Park and can provide breakfast lunch and supper. Our in-house catering menu is available on request and guests can pick and choose whether they want a full catering service or if they would like to have catering on a select few days. Ronnie and Judith are able to cater for up to 30 guests in the house.

- ◆ Breakfast – **£15pp**
- ◆ Lunch – **£28pp**
- ◆ Supper – **£45pp**

For larger events in the Orangery we have a list of external caterers who are all carefully selected and have worked with us for a number of years. Details of caterers are available on request.





A PICTURESQUE ENGLISH COTTAGE

# BONNINGTON COTTAGE



Bonnington Cottage is situated in the oldest part of the Estate and is available as additional accommodation space for Corporate Retreats. The cottage is located a short walk from the mansion and is a two-bedroom property with its own parking and garden space.

Prices for two or three-night stays start from **£500** (inc. VAT).



## ON THE ESTATE

# CORPORATE ACTIVITIES

All of our activities at Goodnestone incorporate the gardens and wider estate so that guests can feel the calming benefits of the countryside. We will work with you to build a bespoke package depending on what your requirements are for your trip.



## FORAGING WITH MILES IRVING

Miles Irving is an internationally renowned wild foods expert, author and public speaker. For corporate guests staying in the Mansion, Miles can create bespoke workshops tailored to the clients needs. This can include a foraging day with Miles ending with a 5-course meal.

Activities can include a seasonal foraging, which will range from spring blossoms, wild garlic, spring greens, wild teas, wild spices, fungi, fruit and nuts in the autumn and winter salads, late fruit and fungi in the winter.

A full day with Miles ranges from **£1,000 - £2,500** (inc. VAT) dependent on the package included. We will liaise with Miles on your behalf and put together a bespoke quote.



## NATURAL PATHWAYS

Natural Pathways was started by Hannah Nicholls in 2002 and offers a variety of outdoor courses for corporate groups. Hannah can organise a Team Building Survival Challenge allowing groups to compete against each other in a series of survival skill challenges. Hannah can also offer non-competitive corporate experiences including a Bushcraft, Staff or Walking Stick Making, Campfire Cooking, Woodland Mindfulness, Natural Crafts and Wood Carving.

A full day with Hannah costs **£90 per person** with a half day at **£55 per person** with a minimum charge of **£300** . Additional charges apply to the Campfire Cooking.

## WILD CLASSROOM

Since founding Wild Classroom in 2019 Scott has been able to combine two decades of teaching experience with a passion for cooking outside over fire. Using a range of traditional and inventive techniques he provides hands-on learning experiences that are enjoyable and rewarding. During these workshops you will learn the art of fire building, fire management along with the basic skills you might need to cook confidently around the fire.

A core aim of Wild Classroom is to prove that food cooked over fire is as delicious as it is fun and with the quality ingredients you will find yourself cooking a range of hearty dishes that will fill the belly and warm the soul.

A 2 – 2.5-hour workshop for up to 10 people is **£50** – additional participants are **£50 per person**. **0**



## FARM TOURS, WORKSHOPS AND ANYTHING FARMING WITH NONINGTON FARMS

The wider estate is farmed sustainably by Nonington Farms headed up by James and Emma Loder Symonds, a dynamic husband and wife team, who put the environment at the forefront of their farming operations. Nonington Farms has been a Leaf (Linking Environment and Farming) Demonstration Farm since 2020 and is the only LEAF Demonstration Farm in the south-east.

Nonington Farms are able to provide a two hour tour of the Estate looking at the regenerative practices, sampling produce from the farm. An Estate tour can be arranged as part of your corporate booking and is **£25 per head** with a minimum cost of **£200 (8 people)**.



## GARDEN TOURS WITH PAUL BAGSHAW

There are 15 acres of gardens at Goodnestone Park which includes the walled garden, green house, parterre, terrace, gravel garden and woodland garden. Our Head Gardener Paul Bagshaw can provide an hour-long garden tour discussing the history of the gardens as well as the various planting schemes and an overview of how the garden builds biodiversity into its design. Paul can also provide some useful hints and tips for any keen gardeners!

Garden tours with Paul are **£20 per person** and can be booked in advance. Please note tours with Paul are only available **Monday – Friday**.





## WORKSHOPS WITH ANNAS COUNTRY FLOWERS

Annas Country Flowers is a seasonal flower farm, growing a wide selection of beautiful, scented blooms. Anna can create bespoke seasonal workshops for corporate groups including creating dried flower wreaths or garlands.

Annas workshops are **£60 per person**.



## COCKTAIL MASTERCLASSES

Our House Manager Ronnie is a trained mixologist and is available to provide masterclasses for the whole corporate group. Ronnie likes to weave a bit of Jane Austen into his cocktail making including the Gin Austen and the Sherringham Old Fashioned.

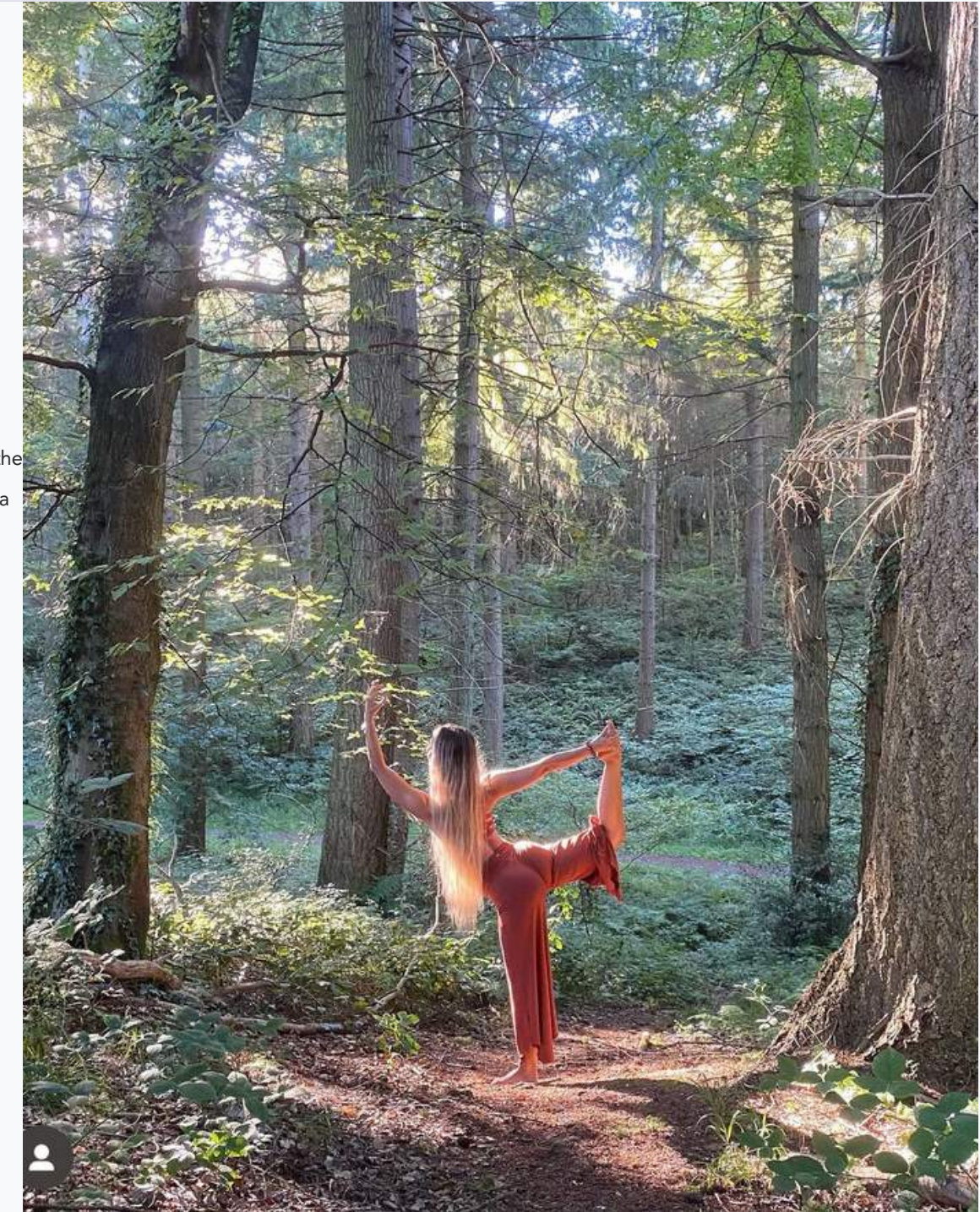
The price per person is **£50**.

## YOGA WITH ALEXANDA POPPY

Alexandra is a qualified yoga and breath-work teacher, specialising in Vinyasa and Yin yoga styles. Her classes are created to bring harmony to the body, to clear the mind and to help you reconnect to the breath. The yoga sessions can either be held on the lawn looking out over the parkland or within the beautiful timber framed Orangery. Classes are suitable for all ages and abilities.

Costs are **£100** for a 1 hour session for up to 10 **£10 per person** people. for 10+ people.

Please note, yoga sessions are only available between **1st April** and **31st October** and any outdoor yoga sessions are weather dependent.



# BREATHING SPACE RETREATS

Breathing Space Retreats is run by Louise Burgess and Sarah Vaughn. Programs are carefully curated and combine mindfulness, mediation, creativity and time spent connecting with nature in the 15 acres of garden at Goodnestone Park. There are a range of corporate workshops/retreats to choose from.

## RECONNECT

Team development, helping people to reconnect, especially for people who work mainly for home. The workshop includes meditation, mindfulness, breathing work, journaling and eco-therapy tasks in the beautiful gardens.

- ◆ 4 hours – £150 per person
- ◆ 6 hours – £200 per person

## INSPIRE

Creating a space to inspire teams to find new, imaginative, innovative ideas. If your team are looking for new solutions to help your business thrive, this class will help.

The workshop includes Breathing work, mindfulness, journaling, group coaching and eco therapy activities all focused on a pre-agreed goal.

- ◆ 4 hours – £150 per person
- ◆ 6 hours – £200 per person

## RETREAT

Small team getaway day for the team. These days are deeply relaxing and nurturing and include mindfulness, meditation, breathing work, journaling and the opportunity for people to blend their own bespoke reflexology wax that they can take home to feel the continued benefits of the retreat.

- ◆ 5 hours – £165 per person
- ◆ 6 hours – £225 per person

*All listed prices are based on 10 people and include all resources and two facilitators.*







GOODNESTONE PARK

T: 01304 695097 E: [enquiries@goodnestone.com](mailto:enquiries@goodnestone.com)